



Elliot Lake

Official Plan

City of Elliot Lake

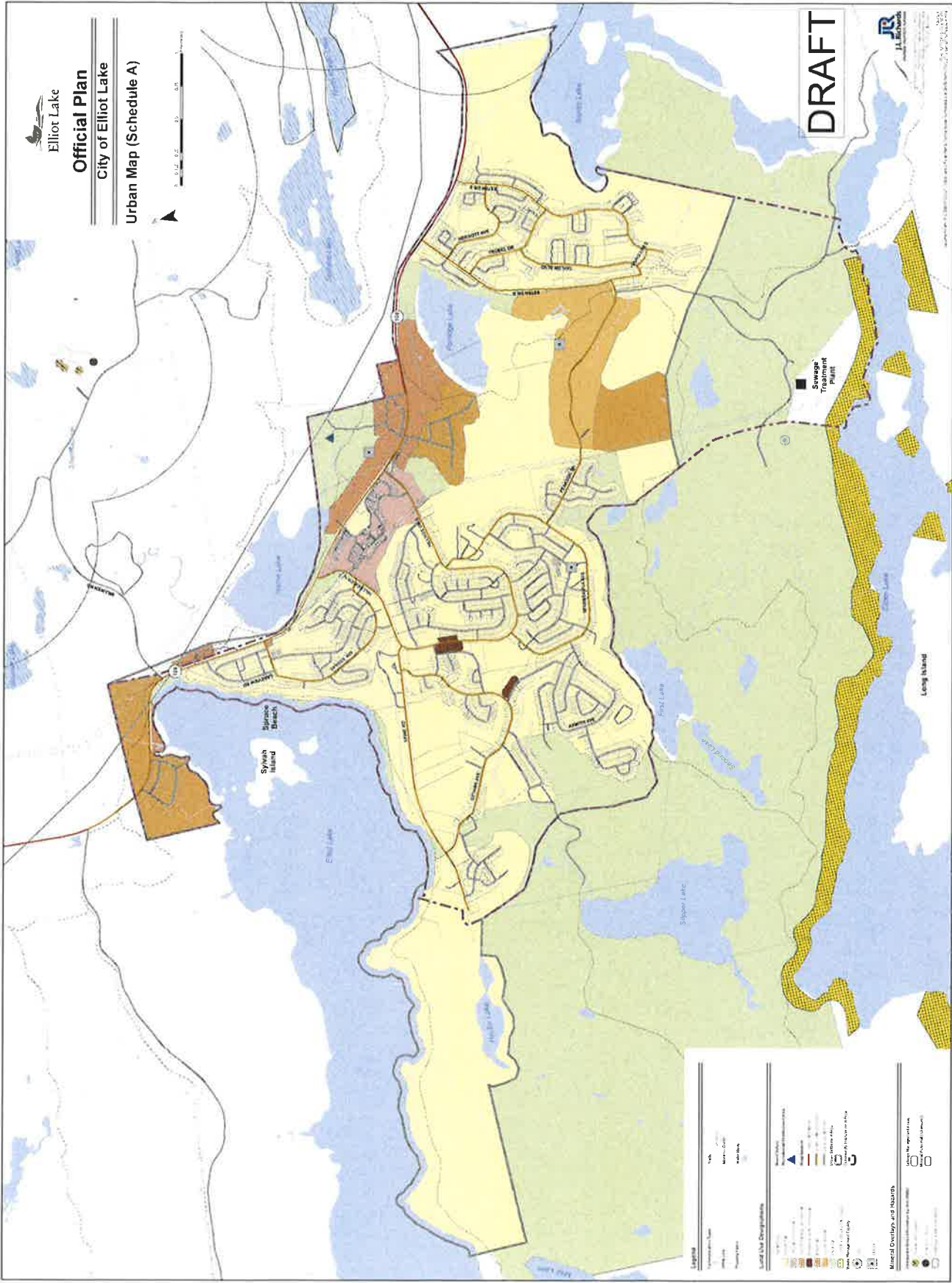
Urban Map (Schedule A)



DRAFT



J.L. Roberts
Professional Engineers Ltd.



Legend

	City Boundary
	Highway
	Local Road
	Water
	Water

Land Use Designations

	Residential Single-Family
	Residential Medium-Density
	Residential High-Density
	Commercial General
	Commercial Office
	Industrial Light
	Industrial Medium-Density
	Industrial Heavy
	Parks and Recreation
	Open Space
	Other

Mineral Deposits and Reserves

	Mineral Deposits
	Reserves



City of Elliot Lake

Official Plan

City of Elliot Lake

Land Use and Mineral Overlays and Hazards Rural Map (Schedule B)



Legend

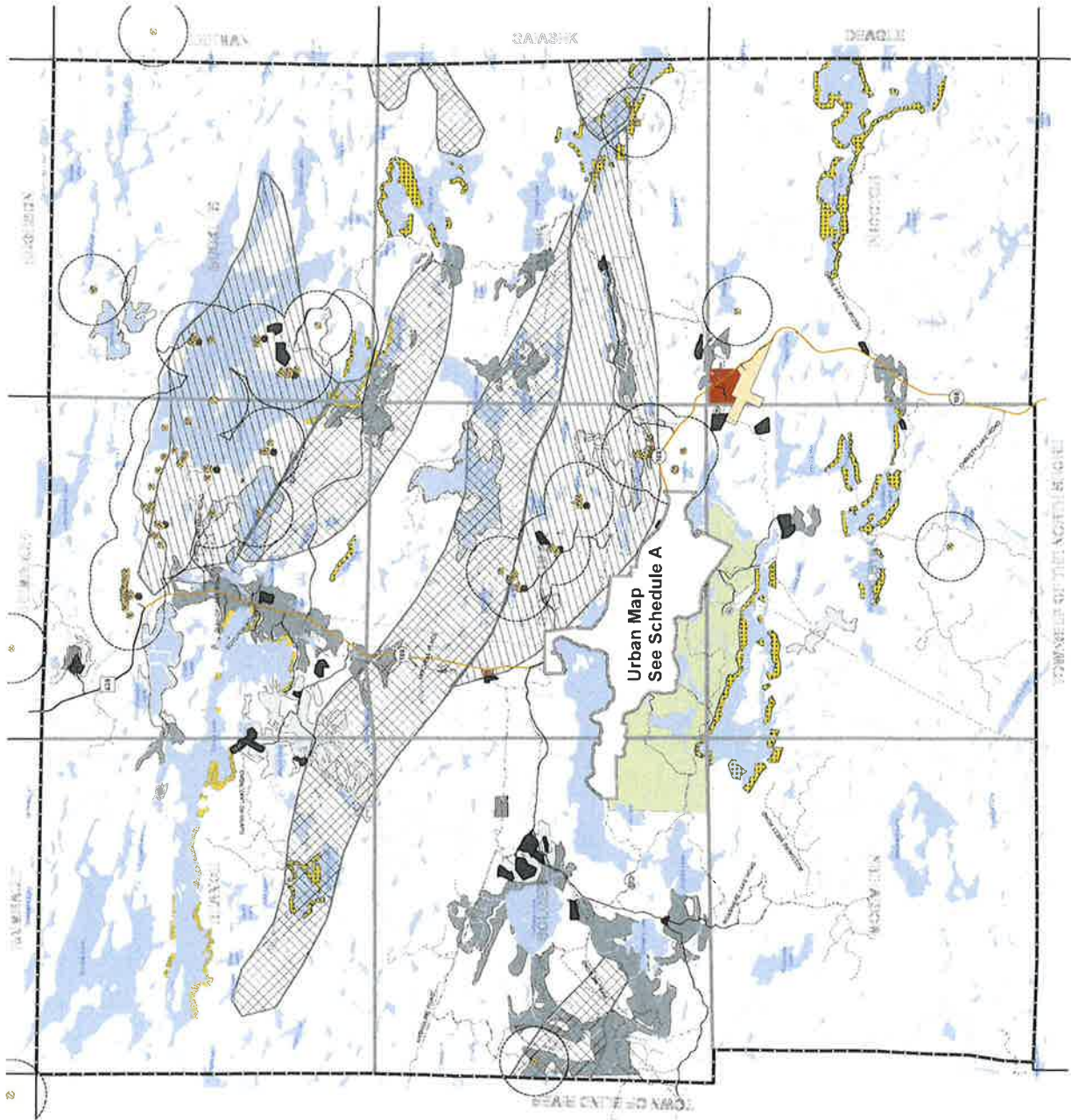
- Communication Tower
- Utility Line
- Road Network
 - Expressway / Highway
 - Arterial Collector
 - Local
 - Residential / Recreational
- Trails
- Property Lines
- Elliot Lake Municipal Airport
- Stream Creek
- Water Body
- Community Improvement Area
 - Geographic Township
 - Municipal Boundary

Land Use

- Road Area
 - Road Commercial / Industrial
 - Parking
 - Special Residential - Existing
 - Special Residential - Future
- Waste Management Facility
 - Com
 - Other
 - PAZ A Quarries
 - Landfill
 - Incinerator

Mineral Overlays and Hazards

- Abandoned Mine Remediation System (AMRS)
 - Abandoned Tailings
 - Abandoned Bores
 - AMRS On-Knowledge Bores
 - Tailings Management Areas
- Mineral Potential (Unmined)
 - High
 - Medium
 - Minimal Appropriate Resource
 - Primary Deposits
 - Secondary Deposits



Urban Map
See Schedule A

DRAFT



J.L. Richards
CONSULTANTS AND SERVICES LTD.

Date: 2011/07/28
Project: Official Plan, Zoning By-law, Schedule B and C
Map of Land Use and Mineral Overlays and Hazards
Map of Elliot Lake

Document Path: G:\2009\2011-01 - Elliot Lake Official Plan, Zoning By-law, Schedule B and C\2011\07\28 - 271332.dwg



Elliot Lake

Official Plan City of Elliot Lake

Natural Heritage and Hazards Overlay Rural Map (Schedule C)

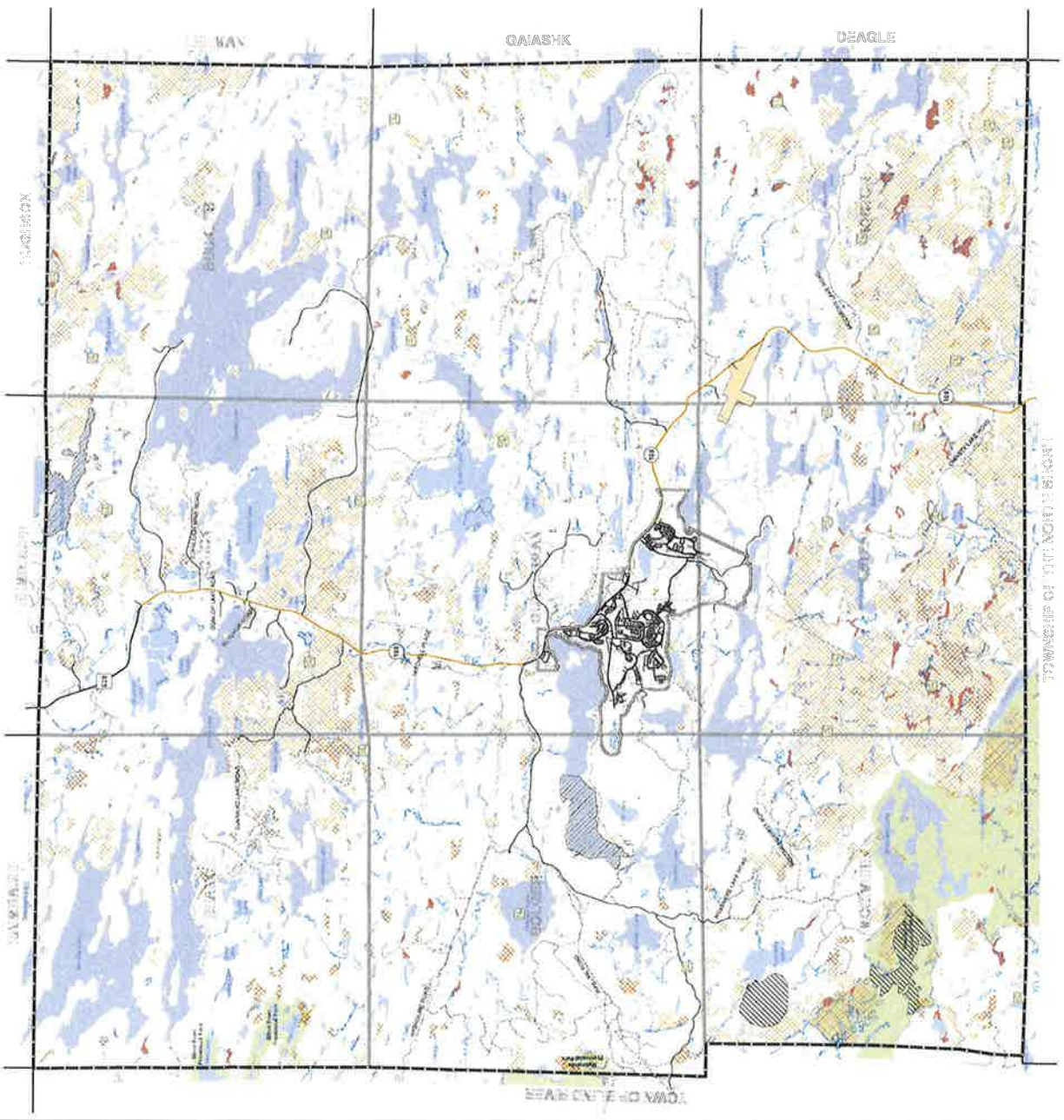


Legend

- Communication Tower
- Utility Line
- Road Network
 - Electricity
 - Water
 - Gas
 - Other
- Trails
- Property Fabric
- Black Lake Municipal Abort
- Stream Class
- Water Body
- Provincial Park Regulated
- Community Improvement Area
- Geographic Township
- Municipal Boundary

Natural Features and Constraints

- Unregulated Wetland
- Lake Trout Lakes
- Palustrine Wetland Classification
- Palustrine Wetland - Common
- Palustrine Wetland - Transitional
- Palustrine Wetland - High
- Palustrine Wetland - Very High
- Palustrine Wetland - Critical
- Palustrine Wetland - Very Critical
- Palustrine Wetland - Super Critical
- Palustrine Wetland - Exceptional
- Palustrine Wetland - Super Exceptional
- Palustrine Wetland - Very Super Exceptional
- Palustrine Wetland - Critical
- Palustrine Wetland - Very Critical
- Palustrine Wetland - Super Critical
- Palustrine Wetland - Super Exceptional
- Palustrine Wetland - Very Super Exceptional



DRAFT



J.L. Richards
Professional Land Surveyors
1990

Data Source: Source Data has been provided by Ministry of Northern Development and Infrastructure and the City of Elliot Lake.
Date: 2017.07.28. 3. Accepted
Document File: R:\0700\070540 - Elliot Lake Official Plan & Zoning By-law Schedule C Rural Off Schedule C.mxd